

How to Update your Software

Based on the information at: <http://www.mapmate.co.uk/resource/mmp003.htm>
with some revisions by Martin C. Harvey

Introduction

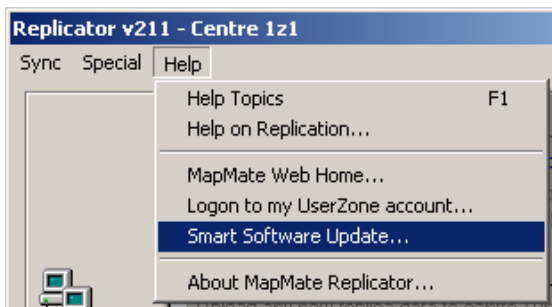
MapMate has two systems for updating itself: “Smart Software Update” for upgrades to the main program software, and “Patches” which are usually small updates to the species dictionary, or to other functions within the program.

How do I update my Software?

If you have MapMate Version 2 or later you can update from the Replicator with the built in 'Smart Software Update'. This will connect to the Internet and look for any new software releases and download and install them automatically for you. All you need is a current licence and an Internet connection.

Smart Software Update:

- Open MapMate and click on 'Replication' in the toolbar
- In the Replicator choose Help > 'Smart Software Update'



The Replicator will go on-line and download all new software releases. When finished, Replicator will say so and may ask you to re-start MapMate.

A Note on Firewalls - If you have an Internet Firewall you will need to tell it that it is OK for the Replicator (also called 'RepMan' or RMxyz where xyz is a version number) to access the Internet. Generally, your Firewall will request that you 'Unblock' or 'Permit' when the program is first used with any internet enabled functionality (Smart Update, Get or Send Sync Files). If you have the option to 'always allow this' then you should tick that option. You should only allow trusted software to access the internet directly from your PC and we strongly recommend you use a firewall to protect your computer and its data.

Info! The update typically installs new versions of MapMate.exe (the main MapMate program), RepMan.exe (the Replicator). The new .exe program versions are called MMxyz.exe and RMxyz.exe where xyz is the version number. Your original program files are always retained (in case anything goes wrong). To confirm the update installation has worked look in Help > About and check the version number there.

Patches

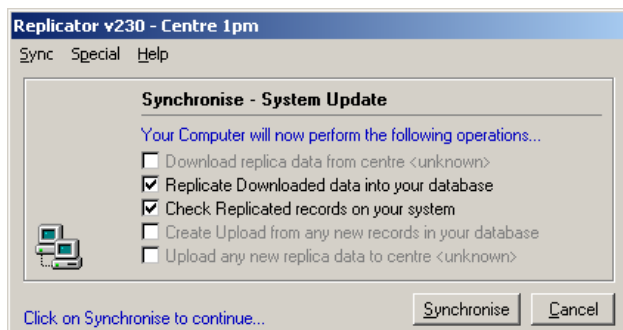
Patches provide changes and additions to resources on your MapMate. These can include checklist revisions, recording term lists or new analysis queries. Again the Replicator handles these for you.

- Patches are issued from your account on UserZone. You need to **logon** at UserZone and you can then see all current patches. To get an account you need to register with MapMate first, at: <http://www.mapmate.co.uk/userreg>
- Remember, to check your account and see what patches are available go to the MapMate home page and click on the 'User Zone' link then logon.

To run any patch:

[It used to be possible to just click on the patch numbers and “run” them, but this no longer works reliably, and you are advised to download the patches first, as described below.]

1. Right-click over the Patch number
2. Choose to 'Save Target As' (or 'Save Link As')
3. Save the Patch into
 - [My] Documents\My MapMate\Data\Cache\Download [for up-to-date installations]
 - C:\Program Files\MapMate\Cache\Download [for older installations]
4. You can save more than one Patch into this folder before going on to step 5.
5. Open the Replicator, which should say at the top “Synchronise – System Update”, and click on the 'Synchronise' button



Info! Patches use the same system as 'sync' files for describing data and always have a .sqz extension. The web site patches are all numbered in sequence and are typically named "220spawn.sqz" - the 220 being the patch number and spawn.sqz indicates this is a MapMate sync file. When you encounter any .sqz file your computer knows that it should give this file to the Replicator for processing.