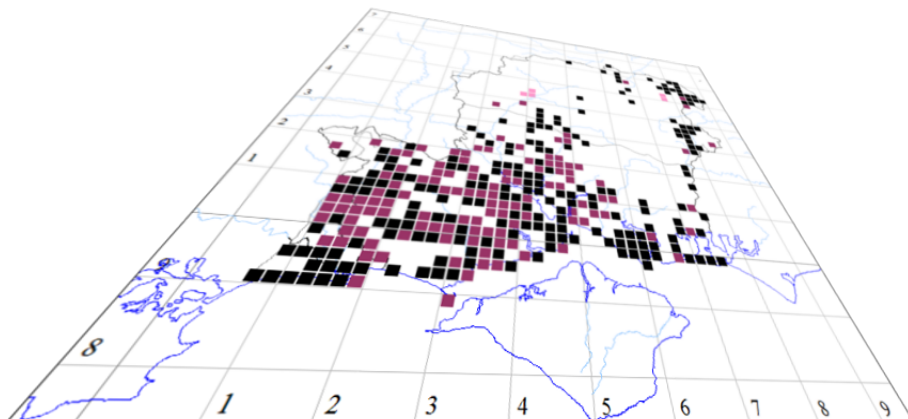


Chapter 10

Keeping up to Date

and Getting Help



The author of this handbook is pleased to have errors pointed out and to receive suggestions for improvement and other comments.

Please send all communications to:

vcirecorder@hantsplants.org.uk

CHAPTER 10 KEEPING UP TO DATE AND GETTING HELP

Updates

Software is rarely static, and although some people like to cling to their trusty 1990s releases of favourite programs, there are usually good reasons for upgrading periodically – at least if the program comes from a company that isn't aggressively driven by marketing. The two most important reasons for upgrading are **enhancements** and **bug fixes**. Somewhere in between these two categories, but equally important if you are moving MapMate from an older to a newer PC with a later version of Windows, are **compatibility** upgrades.

To take advantage of updates after the first year of MapMate use, you'll need to pay the annual license renewal fee (or obtain your software through a scheme like that which the BSBI offers its members, which provides automatic renewal). You'll also need an Internet connection. You then have access to two facilities: **software updates** and **patches**. Changes to the core functions of MapMate normally have to be issued as software updates, and that will include most changes to keep compatibility with the latest versions of Windows. However a very broad range of MapMate features are actually delivered through the MapMate database, and these are made available as patches. As well as the obvious things like updates to taxon lists or new reserve Site lists, even an extension to MapMate like the Schedules and Catalogues package can be delivered as a patch.

Registering on the MapMate web site

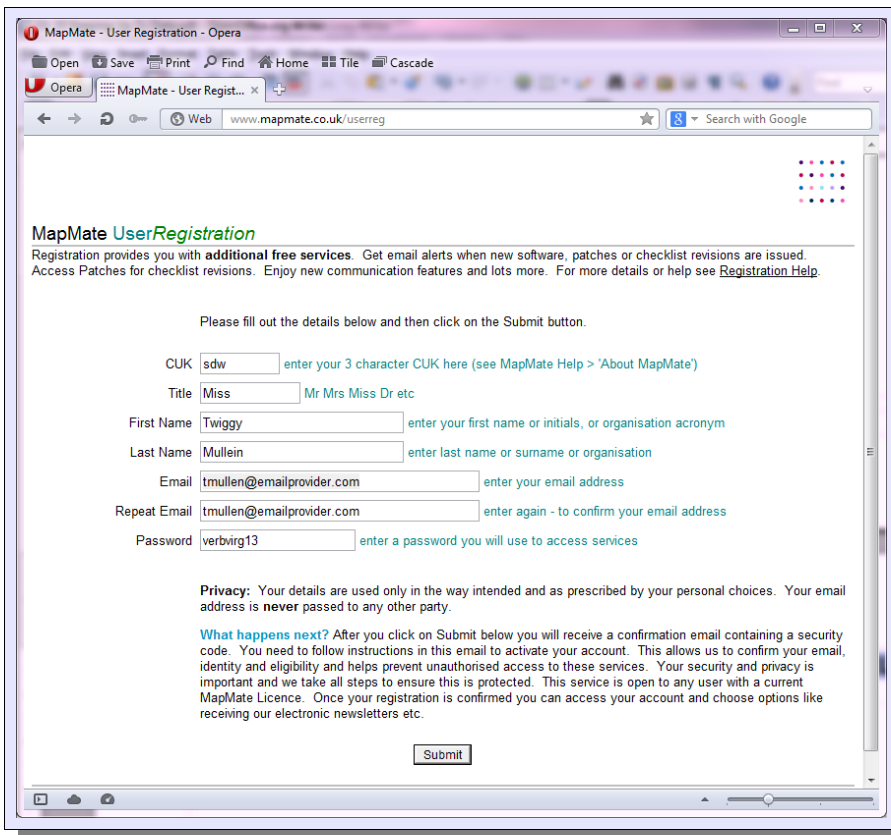
The screenshot shows the MapMate website homepage. The browser window title is "MapMate - UK's favourite biological recording software. - Opera". The address bar shows "www.mapmate.co.uk". The page content includes:

- Welcome to the MapMate Home Page**
- RSPB** logo with the text "The RSPB are amongst many of our users."
- MapMate** description: "MapMate is a revolutionary software package - designed to record, map, analyse and share your natural history sightings. Favourite choice of 1000's of enthusiasts across the UK for biological recording - it is setting new standards for those interested in Birds, Butterflies, Moths, Dragonflies, Mammals, Bats, Plants, Bryophytes, Spiders and Insects of most orders."
- MapMate 2 - just £32**: "biological recording and mapping software" with a small map image and links "Click here for more info" and "Click here to buy".
- Species Checklists**: "We now have a checklist of over 56,000 UK recorded species!" listing various groups like lepidoptera, vascular plants, birds, moths, etc.
- From the field... to your home computer:** "Record most UK fauna and flora and help monitor UK biodiversity."
- On this site:** Links for "MapMate Shop", "Update Shop", "Support Online", "Links", and "User Zone".
- Latest:** "New: Patches to 462 and Newsletters to 103 Available" with links for "Grid-ref and Location Checking Tools", "Register for notification alerts and Patches" (circled in red), and "Discounts for Swapcard Clubs".
- Latest Software Release:** "MapMate240/Replicator240" with a link for "Smart Update".

Copyright © MapMate Ltd. 2013. All Rights Reserved. MapMate is a Registered Trade Mark. RSPB Logo © RSPB, used with permission. [Legal](#) [Privacy](#) [Cookies](#)

If you didn't do so when you first installed MapMate, you'll need to register your license before taking advantage of the services. Either make directly for www.mapmate.co.uk with your Web browser, or select **Help / MapMate Web Home...** from the MapMate main menu.

CHAPTER 10 KEEPING UP TO DATE AND GETTING HELP



MapMate - User Registration - Opera

Open Save Print Find Home Title Cascade

Opera MapMate - User Regist... x

Web www.mapmate.co.uk/userreg

Search with Google

MapMate UserRegistration

Registration provides you with **additional free services**. Get email alerts when new software, patches or checklist revisions are issued. Access Patches for checklist revisions. Enjoy new communication features and lots more. For more details or help see [Registration Help](#).

Please fill out the details below and then click on the Submit button.

CUK enter your 3 character CUK here (see MapMate Help > 'About MapMate')

Title Mr Mrs Miss Dr etc

First Name enter your first name or initials, or organisation acronym

Last Name enter last name or surname or organisation

Email enter your email address

Repeat Email enter again - to confirm your email address

Password enter a password you will use to access services

Privacy: Your details are used only in the way intended and as prescribed by your personal choices. Your email address is **never** passed to any other party.

What happens next? After you click on Submit below you will receive a confirmation email containing a security code. You need to follow instructions in this email to activate your account. This allows us to confirm your email, identity and eligibility and helps prevent unauthorised access to these services. Your security and privacy is important and we take all steps to ensure this is protected. This service is open to any user with a current MapMate Licence. Once your registration is confirmed you can access your account and choose options like receiving our electronic newsletters etc.

Fill in your details; if you're doing it on a computer in a public place, watch out for the fact that your password is not obscured!

Once you've received the confirmation email and followed its instructions, you'll be able to log on to the Web site to check for new patches. You'll also receive occasional emails concerning new patches available, important updates and any significant issues arising from new versions of Windows or other commonly installed PC software.

Software Updates



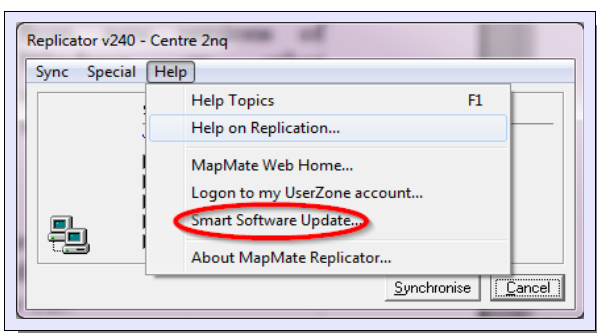
MapMate® V2.4.0
Copyright © 2013 MapMate Limited.

This product is Registered to:
Martin Rand
Centre Unique Key: 2nq (1hb, 5zj, 2f2, 5gx)
Current Generation is: 1532

This Software is provided under Terms and Warranty as defined in the accompanying License Agreement. Portions Copyright: © Bartholomew 2005; © Ray Society 2005. MapMate is a Registered Trade Mark.

There are in fact two ways of getting a software update: online, or on a new release CD. The first is usually the most convenient both for yourself and for the supplier, but there are circumstances, discussed below, where it's necessary to get a new CD.

To check which version of software you currently have installed, run **Help / About Mapmate...** from the MapMate main menu.



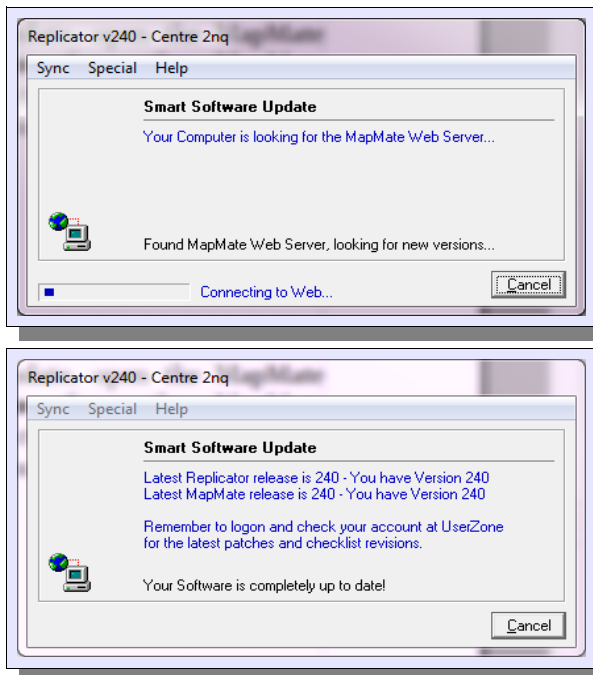
Replicator v240 - Centre 2nq

Sync Special Help

- Help Topics F1
- Help on Replication...
- MapMate Web Home...
- Logon to my UserZone account...
- Smart Software Update...**
- About MapMate Replicator...

To run an online update, open the MapMate Replicator (**Replication** from the MapMate toolbar). Then select **Help / Smart Software Update...** from the menu bar. The update process will check what is available on the MapMate web site against what you have already installed, and only install newer versions.

CHAPTER 10 KEEPING UP TO DATE AND GETTING HELP

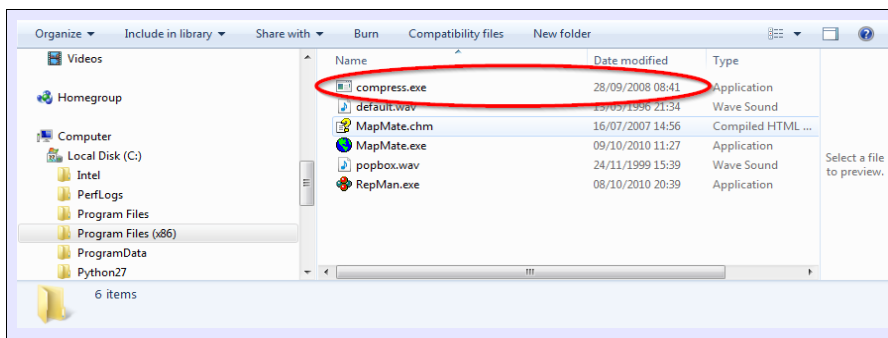


Once you've accepted the original prompt to continue, you'll see this screen. If your computer has a problem connecting to the Internet, this may persist for a long while, in which case you may have to **Cancel** and try again later. Also, if you have a firewall in place to block malicious access to your computer, you may be asked to confirm that this site is allowed to install files on your computer.

Eventually you will see a screen like this (if everything was up to date), or one informing you of changes made. To check whether everything went to plan, you can use **Help / About Mapmate...** again to check the current version.

If you are still using a version of MapMate prior to Version 2.0.0, you definitely need to get an update to the latest version on CD. Contact your supplier for this. Once you have it, update is just like a first time installation, but will preserve all your data.

A number of people experienced problems when moving on to more recent versions of Windows, especially if they then subsequently updated their MapMate version. If you encounter a problem like this, the first step is to contact your supplier or MapMate technical support, describing the problem you are having as precisely as you can. They may then recommend that you get a new update CD from them, or download files from the MapMate Web site that will do the same job.

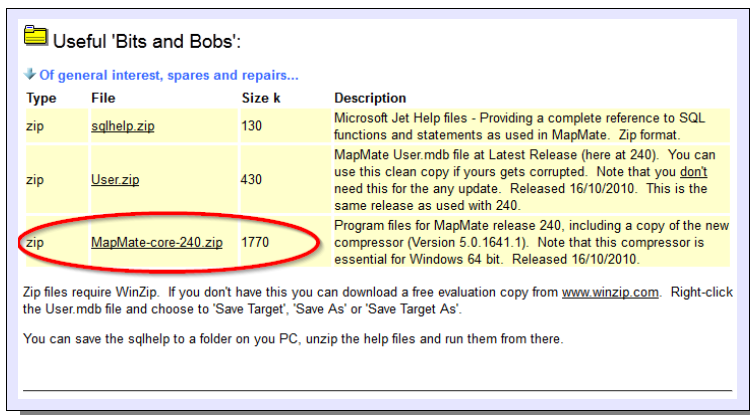


One difficulty that crops up manifests itself as an inability to generate sync files for data exchange with other users. Often the cause is an old version of a Microsoft program for file compression, which is an essential part of the

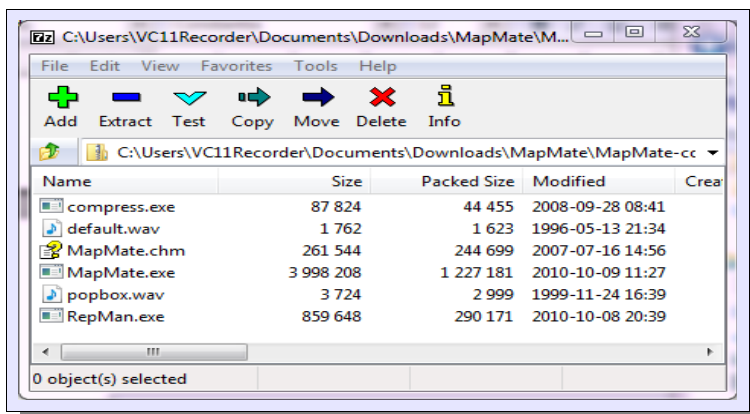
sync file generation process. You will find this program, called **compress.exe**, in the folder where your MapMate programs are stored: on the more recent versions of Windows, this will probably be **C:\Program Files (x86)\MapMate**. It's important that you have the version of this program that supports your version of Windows.

To check that you are up to date, look on the User Zone of the MapMate Web site. Under **Useful 'Bits and Bobs'** you will find a file that provides the latest version of **compress.exe**. This file has changed over time, and it may not be immediately obvious where to look, but at the time of writing it's this one:

CHAPTER 10 KEEPING UP TO DATE AND GETTING HELP



Incidentally, the advice about Zip files here is rather out of date: recent versions of Windows allow you to open Zip files with Windows Explorer just as if they were normal folders. And, if you want a more fully-featured program, there are free alternatives to WinZip such as 7-Zip.



If you download and save this file onto your computer, you can use Windows or a Zip management programme to inspect its innards. Here's 7-Zip's view. You can then check the 'Modified' date of **compress.exe** against the date of the one in your MapMate program folder. If you need to update it, simply extract the file from the Zip file, placing it in the MapMate program

folder. If you want to be cautious, rename the original one first so that it is not overwritten and you can recover it in case of problems.

Patches

Patches are the method of delivering anything which is not part of the core software. This covers both functional optional extras such as the Schedules package, and updates to the database itself, especially the reference tables: the most familiar form of patch for most people will be the update to the Taxa table for a given species group.

You don't need to install all patches, but it makes sense to keep up to date with those which are advertised as 'Required' and 'For all users', and those which relate to species groups of interest to you.

429	Required	17-04-2011	93	Birds	Corrections to the Checklist. Size: 10KB
428	Optional	20-03-2011	92	Birds	Revisions to the Checklist: International names. Size: 265KB
427	Required	20-03-2011	92	Birds	Revisions to the Checklist: BOU A-C. Size: 929KB
426	Required	20-03-2011	92	Arachnida	New Arachnida filter. Size: 10KB
425	Required	11-12-2010	91	Lepidoptera	Revisions to the Checklist. Size: 49KB
424	Verified	11-12-2010	91	Vascular Plants	Revisions to the Checklist. If recording Hieracium please read Document in alert before running this patch. Size: 937KB
423	Verified	11-12-2010	91	Orchids	Revisions to the Checklist. Size: 199KB
422	Required	31-10-2010	89	Lepidoptera	Revisions to the Checklist. Size: 14KB
421	Required	30-10-2010	89	Lepidoptera	Revisions to the Checklist. Size: 12KB
420	Required	30-10-2010	89	Earthworms	A new Checklist. Size: 118KB

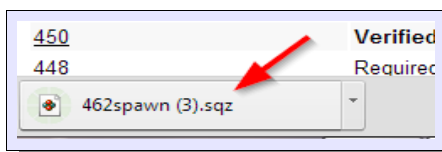
By logging on from the MapMate User Zone you will be taken directly to the page for Patches. Each patch is listed by number, and will have a status of **Required**, **Optional** or **Verified**. If **Required** is shown against an

individual species group, it is only required if you are taking, or will take, an interest in that group. That means that if you revise your areas of interest to take in more species groups,

CHAPTER 10 KEEPING UP TO DATE AND GETTING HELP

you should check here for patches that relate to the new groups and that carry a date later than the issue date of your MapMate distribution CD. **Optional** implies that the patch adds value to MapMate, perhaps for a limited number of users, but is not essential to keep pace with the user community in general. If you have already downloaded and installed a patch, it will be shown as **Verified**. If you lose the benefit of that patch at a later date (for instance, by having to install a fresh copy of MapMate) and you don't have it to hand on your computer, there's nothing to stop you downloading it again, whatever its status.

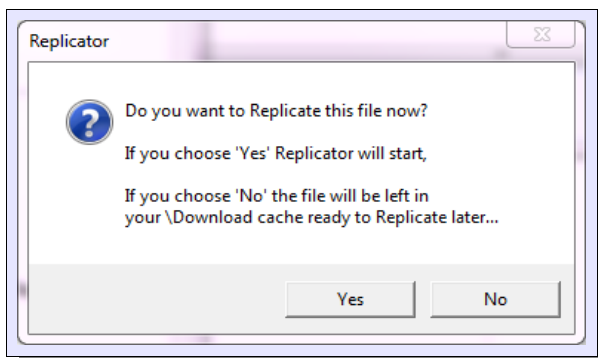
The **Alert** column will tell you in which email alert the details of the patch were published. You can click on the number in the column to call up details, and you should always read these details before downloading a patch, to make sure you understand its effects. For instance, some taxonomic changes are not straightforward, and may have consequences that you need to consider before you apply the patch.



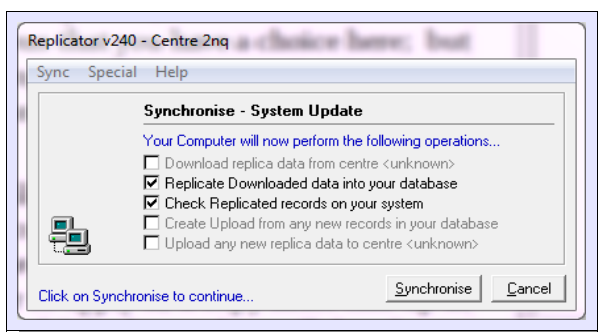
Click on the patch number itself to download the patch for installation. You will then normally be presented with a choice of running or 'opening' the patch immediately, or saving the file to your computer. (Some browsers, such as

Maxthon and Chrome, don't make it immediately obvious that you have a choice here; but look for the text or icon that implies opening or running the file, either in the dialog box that pops up, or in the browser's task bar. The picture shows the link provided in the bottom left-hand corner in Chrome.)

Normally there will be little difficulty in running the file immediately to apply the patch; but if you do have problems, or you want to preserve a copy of the patch on your computer for future use, you can choose the 'save' option. You have free choice as to where to put it on your computer's file system; but eventually, in order to apply it, a copy must end up in the right MapMate data folder. On newer versions of Windows, this will be the **My MapMate\Data\Cache\Download** folder.



Opening the file from the Web site will immediately run the Replicator to apply the patch. That will first let you decide whether to run it straight away or put it in the download folder.



If you defer running it, or if you chose to save the file and put it in the download folder yourself, you will need to start the Replicator at a later time. Whichever way you come at it, the Replicator will then find the file and offer to apply the update.

CHAPTER 10 KEEPING UP TO DATE AND GETTING HELP



If you're catching up with a series of patches, make sure you apply them in chronological order – that is, starting towards the bottom of the list and working towards the top. If you're downloading them rather than running them one by one, that won't be a problem: put them all in the download folder together, and the Replicator will do the sorting out for you from whatever it finds there.

If a patch implements taxonomic changes, it's sometimes best not to be an early adopter. Wait a few days, and keep an eye on the **MM-Users** group on the Web; more on this in the next part of the chapter. Look out for any issues that people find in the patch. These things do not always go smoothly.

Getting Help

Whether you need to learn how to do things or seek help with a technical issue, there are several excellent sources of help for MapMate, and a thriving and helpful online user community.

How Do I...?

If you are relatively new to MapMate or one of its features, and need leading into the topic with something that is more focused on the 'how to' and more fully illustrated than this manual, I can't recommend too highly Martin Harvey's series of video tutorials (28 at the last count), available at the BSBI national web site: <http://mapmate.bsbi.org.uk/home>. Even if you have absorbed everything in this book, you will find new angles and new insights on all the topics here; and if the MapMate learning process is causing you to overheat, Martin's measured and confident tones and his clarity of exposition will soon have you calm again.

Martin has his own web site, with a page devoted to MapMate resources at <https://sites.google.com/site/kitenetter/Home/mapmate>.

Also, don't ignore MapMate's own help resources. Accessible directly from MapMate itself, there are **Help** menus from both the MapMate main menu bar and the Replicator menu. In a few places these files are not fully up to date with the latest versions of MapMate, so if you find something that contradicts what I've written here, or more especially what Martin Harvey has shown in his videos, it's usually safe to assume that we are the more up to date source.

Online, the MapMate User Zone has a number of other useful documents under the heading **MapMate Short Papers and Resources**.

Messages		
Messages	Topics	Hot Topics
Messages 6279 - 6308 of 6308 Oldest < Older Newer > Newest Start Topic		
Messages: Simplify Expand		
	Author	Sort by Date <input type="checkbox"/>
6279 maps	Janet Boyd janetboyd2005	Mar 12, 2013 8:17 pm
Hi, Just to let you know that my problem with maps has been sorted. Mark advised me first to select Records, Sample then Records again to reattach the dataset,...		
6280 Re: Taxon records apparently changed within Mapmate	lan mothman45uk	Mar 15, 2013 10:45 am
Has this been raised with Mark? Ian...		
6281 Re: Taxon records apparently changed within Mapmate	lan mothman45uk	Mar 15, 2013 10:52 am
I don't think it is the same problem. Both cristella and advenella are still in the taxon library. The problem seems to be that the fly luteoscutella has been...		
6282 Windows 8	lan mothman45uk	Mar 15, 2013 11:00 am
MapMate newsletter 104 has just been sent out by Mark to announce that *currently* he is not recommending Windows 8 as it is causing problems with MapMate. ...		
6283 Edit a site	Colin Hart colin_hart1947	Mar 15, 2013 6:08 pm
I can't find out how to change a site name in MapMate. I've searched the built-in help, the MapMate website and a Google search. Can anyone help me, please. ...		

Finally, I strongly recommend you to join the online Yahoo! Group **MM-users**. This is a self-help group entirely independent of Mapmate Ltd. You will first need to get one of the moderators of the group to invite you in; the group is moderated to prevent spammers, trolls and other weird life-forms from making participants' lives a misery and exposing them to unnecessary risk. Even so,

CHAPTER 10 KEEPING UP TO DATE AND GETTING HELP

off-topic messages sometimes pop up purporting to be from unfortunate genuine users who have had their email accounts hijacked, and it takes a certain amount of time for a moderator to intervene. So, if you see anything that looks suspect, report it to the moderator and **don't open any links** that you see in that message.

I hope that hasn't discouraged you in any way from participating, because there is a wealth of helpful information to be found here at <http://tech.groups.yahoo.com/group/MM-Users/>. For example, if you are nervous of writing SQL to produce new user queries, you can state your requirements and someone will either come up with the code or point you to a place where you can find it. Among the many friendly and knowledgeable people on the site, one could single out Martin Harvey and Ian Thirlwell for the depth of their knowledge and their readiness to respond. The easiest route to getting invited is to use the link provided on the Web pages cited above. If you don't have one already, you'll need to register an identity with Yahoo! under which you log on. Until you have this, you won't be able to get access to the group.

Technical Problems

Although I've provided some advice on avoiding pitfalls throughout this manual, I'm not going to attempt a wide-ranging analysis of potential technical issues. For a product with a life-history as long as MapMate's (12 years), most generic problems will have been tackled; and difficulties now tend to arise in specific circumstances that need to be fully considered to find an answer.

Technical problems can be both deeply frustrating and extremely worrying, but if you want to get a speedy and satisfactory response to an issue, it's important that you collect your thoughts, marshal your evidence and tackle it systematically.

Is it clearly a fault in the software?

Unexpected crashes, error messages in 'computerese' and similar problems may as well be taken directly to the MapMate support team, whose email address you will find on the MapMate Web site.

Was it something I did?

First think back over anything novel or tricky you did with MapMate in the recent past. Also consider any updates or patches you installed shortly before the problem appeared.

If you have a reasonable doubt that it might have been something you did, or the result of using functionality you don't fully understand, you can consider first raising it as a query on the **MM-users** group. Someone else may have been there before you, or understand the background a bit better. If not, you will usually find that you'll be recommended to take it forward to MapMate.

Marshal your evidence

You will help yourself, and also earn the undying friendship of the user group and the MapMate support personnel, by presenting as much pertinent information as precisely as possible up front. Here are things to consider:

CHAPTER 10 KEEPING UP TO DATE AND GETTING HELP

- Report the version of MapMate you are using.
- Report the version of Windows you are running it on.
- Think through the immediate steps you took to cause the problem to manifest itself, and document them.
- If you did any procedures out of the ordinary shortly before that (such as repairing a MapMate database), document those too.
- If the problem has a visible manifestation, take screen shots and supply those. This is particularly important with cryptic error messages; you may not understand them, but someone will – as long as they are faithfully reported.

Finally, don't forget that most problems, however serious, can be prevented from becoming disasters by following a backup procedure. Do your revision in Chapter 6 if you need to!